



ABBOTT

RENTAL & PARTY STORE

502 UNION STREET, LITTLETON, NH
603-444-6557
WWW.ABBOTTRENTAL.COM

Assembly Instructions Operator's Manual

DUNK TANK



Inflatable Bounce Rides
Interactive Games

Safety Rules - DunkTank

1905 NE Main Street
Simpsonville, SC 29681
(800) 845-2830 (864) 967-4312
FAX: (864) 963-7750

A RESPONSIBLE ADULT IS REQUIRED IN ATTENDANCE AT ALL TIMES

1. Keep Dunk Tank away from all electrical sources.
2. Check tank, tank steps, window mounting, dunking board and trailer frame for sharp edges or damage which could result in personal injury.
3. Maintain water level to at least one (1) inch above the window at all times.
4. No one allowed in the tank less than 54 inches tall.
5. Only one occupant at a time allowed on the dunking board or in the tank.
6. Always wear water socks or tennis shoes to keep from slipping.
7. Water must be drained when tank is unattended. **NO EXCEPTIONS!**
8. Only Use "Soft" Soft Balls! Under no circumstances should a baseball, standard soft ball or any other hard object be thrown at target.
9. Never stand on the dunking board.
10. Sit forward and keep hands on knees while seated on dunking board.
11. DO NOT jump up after being dunked.
11. DO NOT hit target with your hand.
12. DO NOT operate Dunk Tank in any type electrical storm.

Towing Instructions

1. Check coupler and install tongue safety locking pin before towing.
2. Always use safety chains. Check brake lights and turn signals before towing.
3. Ensure that the tires are properly inflated as per the manufacturer's specifications.
4. Ensure that the target frame is in its folded and locked position.
5. Do Not place the vehicle in motion before everyone is in the vehicle and properly seat belted.
6. Do Not exceed the recommended towing speed of 45 mph.
7. Do Not load or haul any items in or on the Dunk Tank. Trailer is designed to haul the Dunk Tank only!
8. Do Not allow any passengers to ride in or on the Dunk Tank or trailer while towing.
9. **ANTICIPATE STOPS! BRAKE EARLY!**
10. Slow down and shift to lower gear when entering a downgrade.
11. Slow down for curves, bad weather, hazardous road conditions and expressway exits.
12. Should your vehicle/trailer combination experience unusual movement, **DO NOT BRAKE, SPEED UP OR TURN YOUR STEERING WHEEL.** Let off the gas pedal and keep the steering wheel straight to maintain the lane of travel until you can pull off the roadway safely.
13. If the vehicle/trailer combination runs off the road **Do Not Panic,** hold the steering wheel straight. Do not apply the brakes or turn sharply. Slow down and gradually turn the steering wheel to get the vehicle back on the road and carefully re-enter traffic.

Dunk Tank Set-Up Instructions

- Step 1 Disconnect trailer safety chain and electrical tow plug from vehicle.
- Step 2 Unhook Dunk Tank from vehicle.
- Step 3 Place Dunk Tank on a flat, level surface clear of debris.
- Step 4 Pull the tongue safety pin and rotate (pull) tongue fully to the side and install safety pin.
- Step 5 Stand Dunk Tank to its upright position.
- Step 6 Close tank drain.
- Step 7 Begin filling tank with water. A minimum of one (1) inch above the top of the window.
- Step 8 Remove the locking bar that secures the target frame to the Dunk Tank.
- Step 9 Pull release pin and open the target frame.
- Step 10 Lock target frame to tongue with locking strap.
- Step 11 Latch dunking board to trigger latch.
- Step 12 A responsible adult is required to be in attendance at all times (no exceptions).

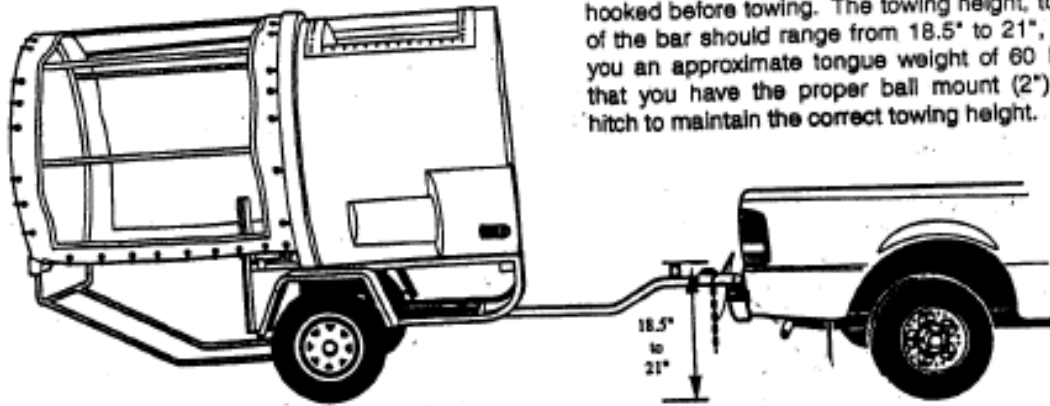
LET THE FUN BEGIN!

**Assembly Instruc
Operator's Manual**

DUNK TANK

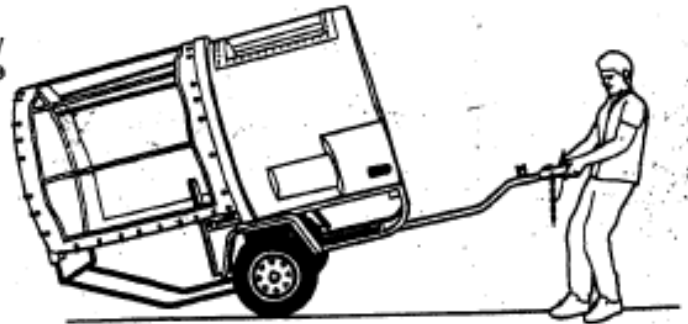
Vehicle Hook Up

Unit is shown in its tow position and hooked to the delivery vehicle. Safety chains and lights must be hooked before towing. The towing height, to the bottom of the bar should range from 18.5" to 21", which gives you an approximate tongue weight of 60 lbs. Ensure that you have the proper ball mount (2") or receiver hitch to maintain the correct towing height.

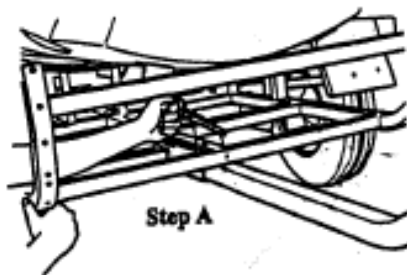


Unhook from Vehicle

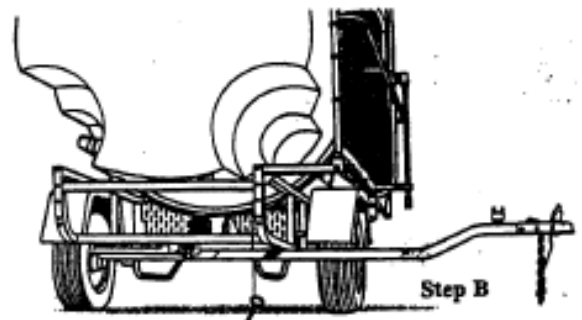
Once at the installation site, unhook lights, safety chains and Dunk Tank from the tow vehicle. Place Dunk Tank at its site location.



Rotate Tongue



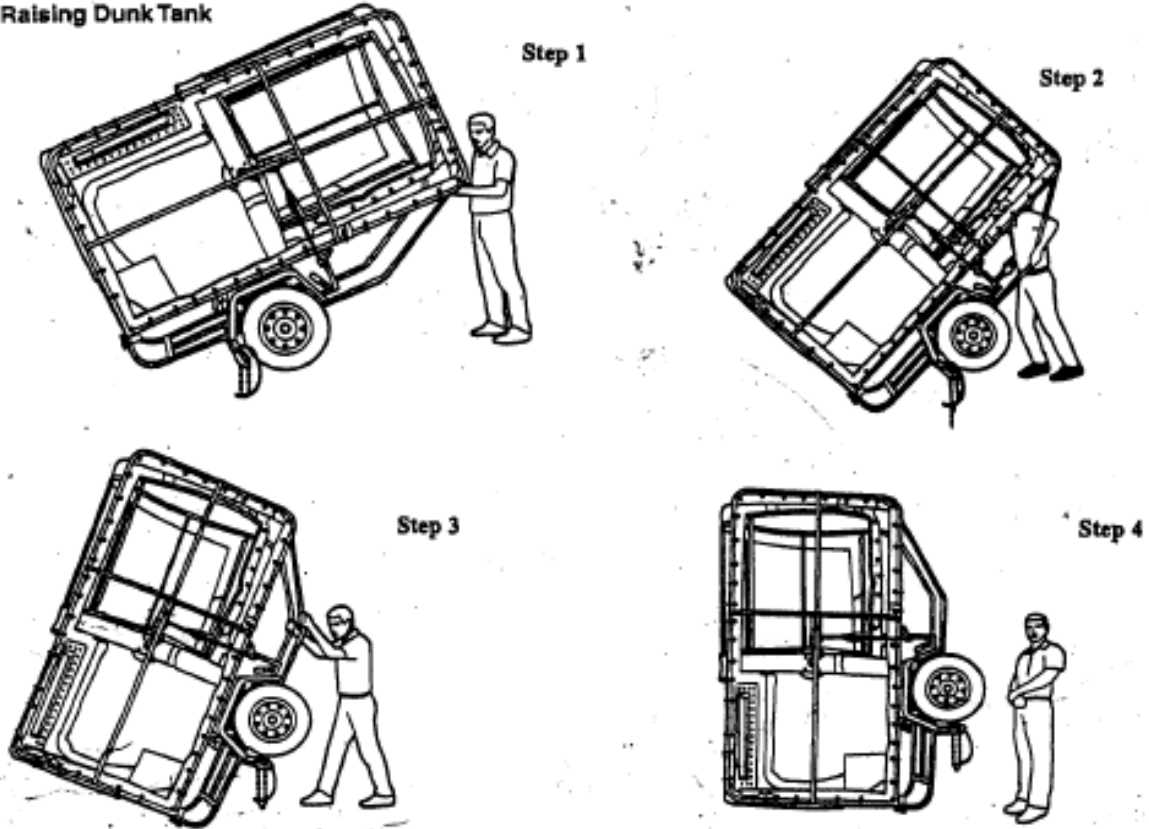
Remove tongue lock pin (Step A) and rotate tongue to side of unit (Step B as shown). Install lock pin to hold tongue in place.



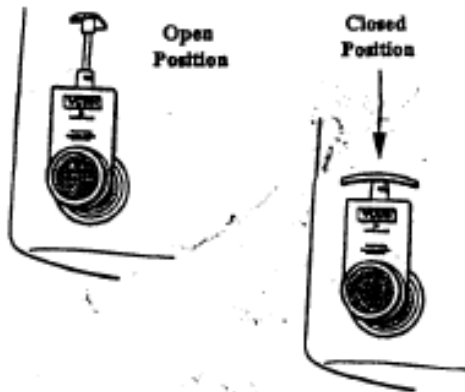
**Assembly Instructions
Operator's Manual**

DUNK TANK

Raising Dunk Tank



Gate Valve Operation



Raise Dunk Tank to its upright position in four easy steps as shown in the illustration. Ensure that the Dunk Tank is properly positioned and that the gate valve for the tank is closed before filling the unit with water.

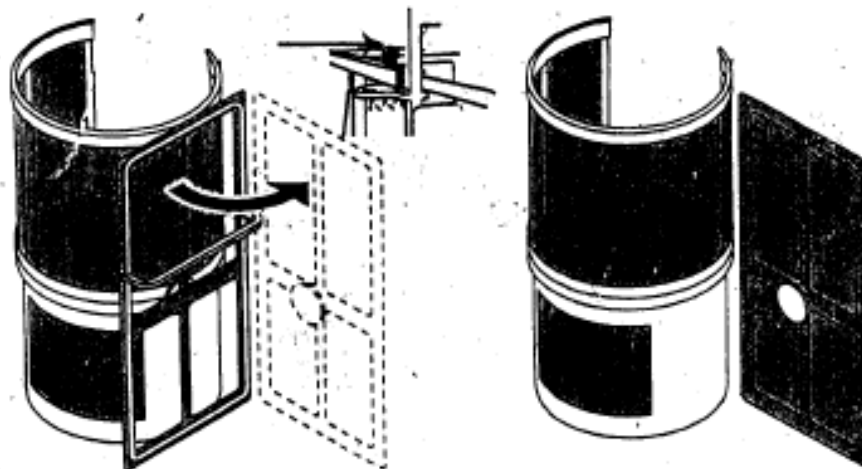
DUNK TANK

Assembly & Operation

Fold Target Frame



Transport Lock D-clasp pin



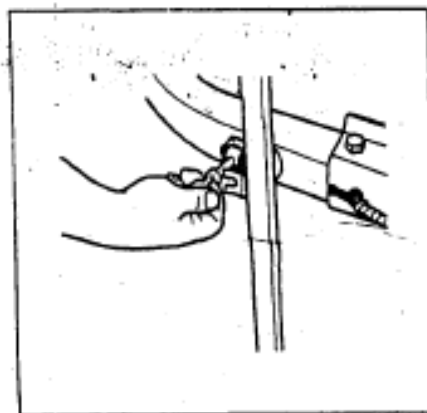
Once the Dunk Tank has been positioned at its site location, it is time to fold the frame out to its operating position. Remove the D-clasp pin from the transport lock as shown. Let rod drop to a downward position. Be sure to install the D-clasp pin in the clevis so that it does not get lost.

Unhook target frame locking arm, then pull pin on frame and rotate target frame into the operating position. Lock into place by releasing the pin.

Lock Target Frame

Once target frame is in its operating position, lock frame into place as shown in the illustration at right.

Note: Target netting has been removed for



Filling Dunk Tank

Once the Dunk Tank has been positioned at its site location and the target frame locked into its operating position, it is time to fill the unit with water. Keep in mind that filling the unit to 1" above the window will require approximately 353 gallons of water and will take some time to fill up.

Tear Down and Removal

1. Drain tank completely before tilting down. Put a board or pad down to prevent washing away the soil or grass.
2. Lock target frame to transport position.
3. Lower Dunk Tank to its wheels.
4. Remove tongue locking pin and rotate tongue to its tow position. Re-install locking pin.
5. Attach to delivery vehicle, plug lights in, hook safety chains and ensure that you have complied with all towing instructions as outlined in the Operator's Manual before transporting Dunk Tank from the jobsite.